

OFA STREAMER URC 7935

INTRODUCTION

Thank you for purchasing the One For All Streamer Remote. This remote is designed to be used to control streaming boxes such as an Apple TV or a Roku, while also controlling the Power and Input of your TV, as well as the Volume of your TV or Sound Bar / Audio Video Receiver. The remote also features handy shortcut macros for direct access to your favourite streaming apps. And the multi-coloured LEDs behind the menu ring will help you to know which device you are controlling, make setup easier, and can even be customised to a colour of your choice.

ENGLISH - PRODUCT DISPOSAL
(EUROPEAN DIRECTIVE 2012/19/EU)

The crossed out wheeled bin symbol on this product ensures that this product is manufactured using high quality components that can be recycled and reused according to European Directive 2012/19/EU. Please do not dispose of this product with your normal household waste, refer to local regulations for the proper collection or disposal of electrical and electronic products. This will help this will help in preventing negative effects on the environment and/or human health.

BATTERY DISPOSAL
(EUROPEAN DIRECTIVE 2006/66/EC)

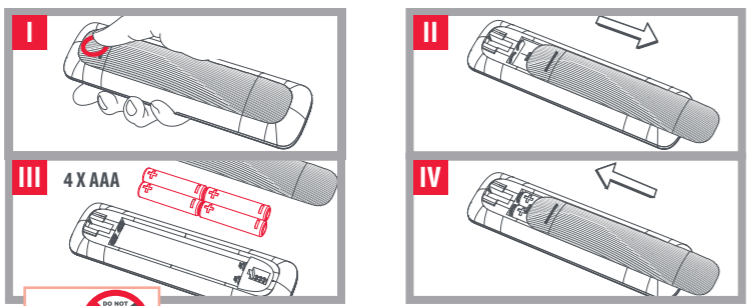
Please do not dispose of your batteries with your normal household waste, refer to local regulations for the proper collection or disposal. This will help preventing potential negative effects on the environment and/or human health.

GUARANTEE TERMS AND CONDITIONS
UNIVERSAL ELECTRONICS warrants to the original purchaser that this product will be free from defects in materials and workmanship under normal and correct use for a period of 3 years from the date of original purchase. This product will be repaired or if necessary, replaced free of charge if it has been proven to be defective within the 3 year warranty period. The forwarding costs are on the account of the owner; the costs of returning the product are on the account of UNIVERSAL ELECTRONICS.

This warranty does not cover damage or failures caused by products or services not supplied by UNIVERSAL ELECTRONICS, or which result from not mounting the product according to manual instructions. This also applies when the product has been modified / repaired by others than UNIVERSAL ELECTRONICS or if a fault is the result of accident, misuse, abuse, neglect, mishandling, misapplication, faulty installation, improper maintenance, alteration, modifications, fire, water, lightning, natural disasters, wrong use or carelessness.

To obtain warranty service during the warranty period contact [...] and please note that we need your original purchase receipt so that we may establish your eligibility for service. If you have bought this product for purposes which are not related to your trade, business or profession, you may have legal rights under your national legislation governing the sale of consumer goods. This guarantee does not affect those rights. www.oneforall.com

PREPARE YOUR REMOTE FOR INSTALLATION



CAUTION: Risk of explosion if battery is replaced by an incorrect type. Use quality Alkaline batteries.

KEY DESCRIPTIONS



SETUP

The OFA Streamer remote is pre-programmed to control a Roku streaming box, just insert batteries and it will work directly. This can also work for a Now TV Box from Sky or a Kwesé Play box. However it can also be programmed to control another brand of streamer as well as the Volume, Mute, Input and Power of your TV, or if required, the Volume and Mute of your Sound Bar. You can set up these devices on your remote as follows:

A - SIMPLESET

If the brand of your device is shown below, you can use the SimpleSet system described in this section, please locate the brand of your device and note the key associated with it.

TV

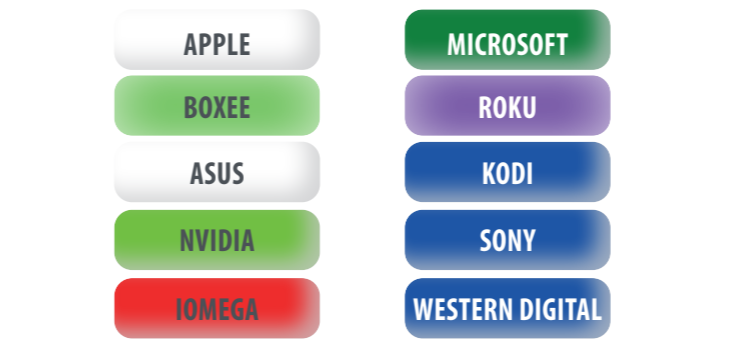
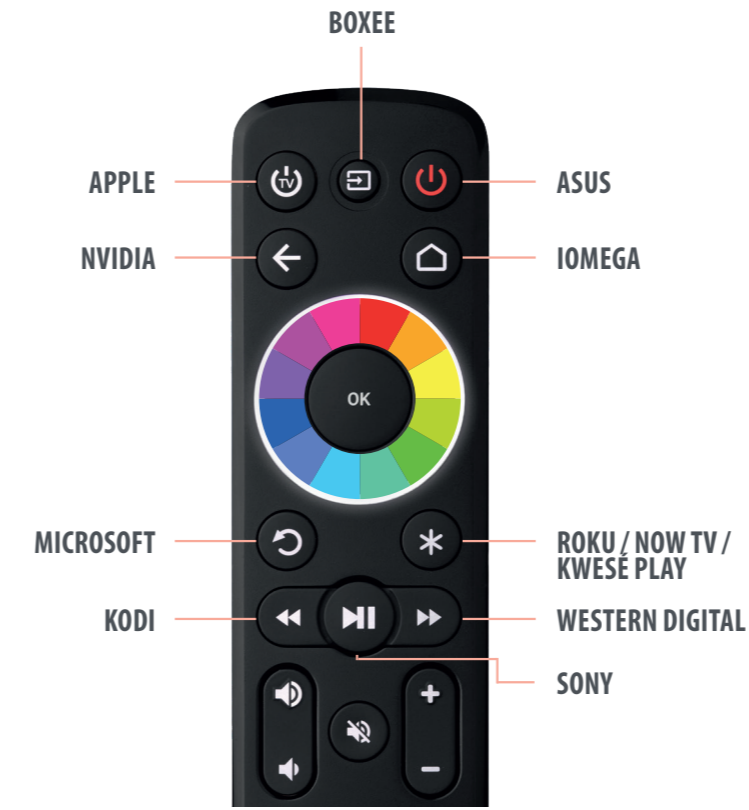
TV Power	BUSH	Replay	SAMSUNG
TV Input	GRUNDIG	Options	SONY / SHARP
Streamer Power	LG	Rewind	TCL / THOMSON
Back	PANASONIC	Play/Pause	TOSHIBA
Home	PHILIPS	Fast Forward	VIZIO



SETUP

STREAMER BOX

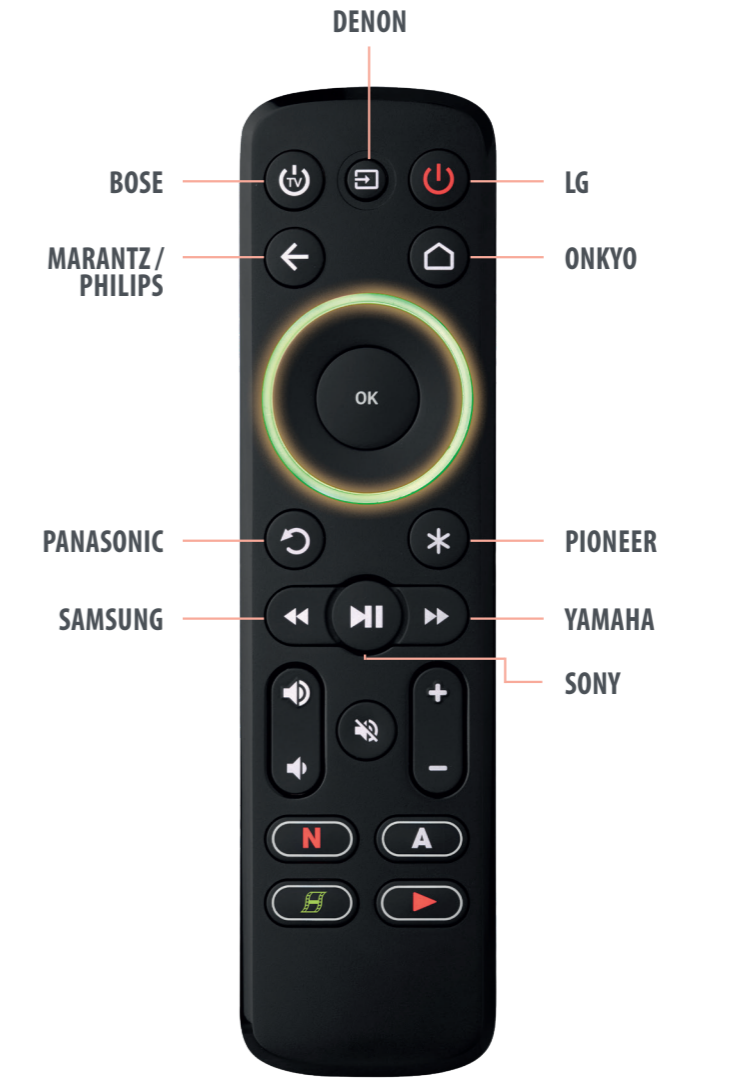
TV Power	APPLE	Options	ROKU / NOW TV
TV Input	BOXEE	(By SKY) / KWESÉ PLAY	
Streamer Power	ASUS	Rewind	KODI
Back	NVIDIA	Play/Pause	SONY
Home	IOMEGA	Fast Forward	WESTERN DIGITAL
Replay	MICROSOFT		



SETUP

SOUND BAR / AUDIO RECEIVER

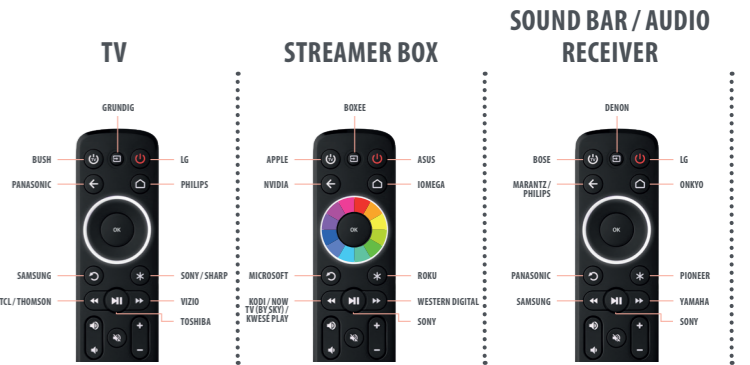
TV Power	BOSE	Replay	PANASONIC
TV Input	DENON	Options	PIONEER
Streamer Power	LG	Rewind	SAMSUNG
Back	MARANTZ / PHILIPS	Play/Pause	SONY
Home	ONKYO	Fast Forward	YAMAHA



SETUP

To set up your device:
1. Turn on your device (not on standby) and point the OFA remote towards it. If you are setting up a Streaming device, make sure a movie or TV show is playing.

2. To set up:
- 2a. **TV**
Hold down **TV Power** and **BACK** keys until the yellow LED under the ring blinks twice.
- 2b. **STREAMER / DIGITAL MEDIA BOX**
Hold down **STREAMER POWER** and **HOME** - until the red LED under the ring blinks twice
- 2c. **AUDIO RECEIVER, SOUND BAR**
Hold down **Volume +** and **Volume -** until the Green LED under the ring blinks twice.
3. Hold down the key for your brand and device as listed left - e.g. 6 for Replay (⏮) for a Samsung TV.



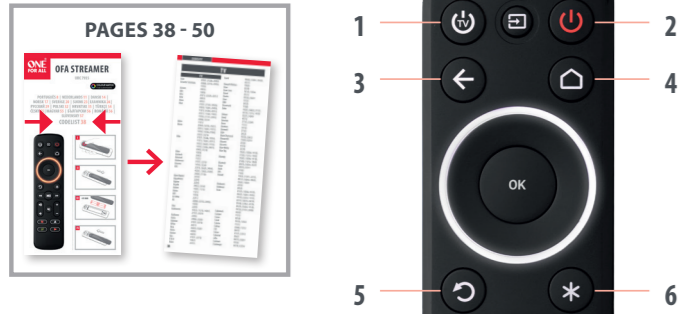
4. For TV the remote will send the Power key every 3 seconds, for a streaming box the remote will send the Play/Pause function, and for an AV Receiver or Sound Bar the remote will send Mute until your device Mutes volume.
5. As soon as your device reacts by turning off (TV) Pausing (Streaming box) or Muting (Audio device), release the key.
6. The LED will blink twice in green and the remote should now operate your device.
- If you find one or more keys do not work as you expect, start again at step 2 – the remote will start with the next code in the memory.

SETUP

B - SETUP BY CODE

If the brand of your device is not listed in the SimpleSet feature, you can set up by trying codes individually. To do this firstly locate your brand in the Code List. Brands are listed by device type; TV, Streamer or Audio (Receiver or Soundbar).

Each code consists of **5 digits**, which can be entered by using the following keys to represent the digits 1-6:



1. Turn on your device (not on standby) and point the OFA remote towards it.
2. To set up:
 - 2a **TV**
Hold down **TV Power** and **BACK** keys until the yellow LED under the ring blinks twice.
 - 2b **STREAMER / DIGITAL MEDIA BOX**
Hold down **STREAMER POWER** and **HOME** - until the red LED under the ring blinks twice
 - 2c **AUDIO RECEIVER, SOUND BAR**
Hold down **Volume +** and **Volume -** until the Green LED under the ring blinks twice.
3. Enter the first 5 digit code listed for your brand (e.g. **31331** for **Telefunken TV**).
4. The green LED will blink twice.
5. Now aim the remote towards your device and press the Power (or Mute*) key.
6. If the device turns off (or mutes*), your remote is ready to use. If not, repeat steps 2-5 with the next code in the list.

* If you are setting up an Audio Video Receiver or Sound Bar, please try the Mute key during step 5.

SETUP

After SimpleSet or Code Setup

Your One For All remote can operate up to three devices. Most keys will control your streaming box, but you can control some functions of your TV and Sound Bar or Audio Video Receiver

If you set up a TV, the Volume Up, Down, Mute, TV Power and TV Input keys will then control your TV. The menu ring will light up in yellow to show you are controlling the TV.

If you then also set up an Audio Device such as a Sound Bar or Audio Video Receiver, the remote will then control the Volume Up, Down and Mute of that device. The menu ring will light up in green to show you are controlling the Audio Device.

Input Shift

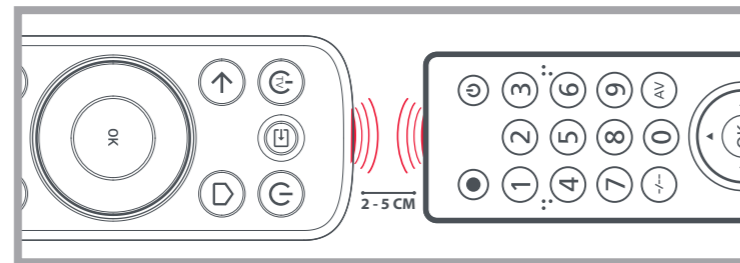
As the TV Input key is intended to select the input on your TV and most TVs use a menu to select from a list of inputs, when the TV Input key is pressed and a TV is set up, the Menu Up, Down, Left, Right and OK keys temporarily control the TV. If the OK key is pressed, or no key is pressed for ten seconds, these keys will revert to controlling your streamer.

C - LEARNING

Your One For All remote control can learn any function from any other working remote control. This is a quick and easy one-time setup that allows to control any infrared controlled device you have in your living room. You can even combine multiple devices in one easy to use remote control – for example you could teach the volume keys to control your Sound Bar, the TV Power and Input keys to control your TV, and the rest of the keys to control a Streaming box.

To do this, firstly make sure you have all your original remote controls to hand, and that they have working batteries in.

To learn functions, the original remote should be approximately 3cm from the OFA remote, pointing towards it as shown below:



1. Hold down TV Power and Mute until the red LED blinks twice.
2. Press and release the key you want to learn a function onto (for example the TV Power key) – The red LED will blink once and go out.
3. Press and release* the corresponding key on the original remote, for example Power.
4. The LED will blink green twice to indicate the key has been learned correctly.
5. Repeat steps 2 and 3 for each key you want to learn – remember you can learn from multiple remotes, but only one function per key.
6. When you learned all the functions you require, press and hold TV Power key until the green LED blinks four times.

SETUP

Hints:

- If the red LED shows one long blink at step 4, the function was not learned correctly, please try again from step 2.
- If you find one or more keys don't work properly after set up, you can re-enter the learning mode at any time by repeating the procedure from step 1.
- To delete a learned function, hold down Streamer Power (🔴) and Mute (🔇) until the red LED blinks twice, and press the key to delete twice.
- If one or more of your original remotes aren't working, you can still set up the One For All remote by SimpleSet (B) or Code Set Up (C).
- After Learning, default colour of the Menu Ring LED is red. If you would like to change this, see "Choose Colour".

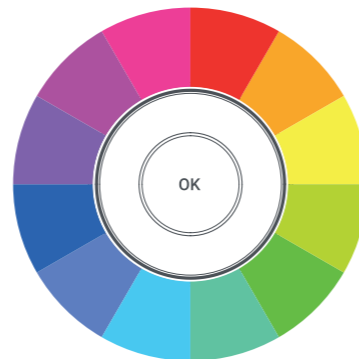
* Some remotes send commands differently. If you find a function cannot be learned, try holding down the key on the original remote instead of pressing and releasing.

MULTI-COLOURED RING

The ring around the menu directional keys lights up in a number of different colours. During programming the colours will guide you through the setup process, and after you have set up your devices they will indicate which device you are controlling.

When controlling TV, the ring will light up yellow, and when controlling a Soundbar or Audio/Video Receiver it will be green. The colour for the Streamer can change depending on the setup method and the brand of your streaming device. The One For All remote is pre-programmed for a Roku streaming box so the default colour is purple, and if you follow the SimpleSet procedure to set up another brand (see SimpleSet), it will change to a colour associated with the brand you chose, for example dark green for a Microsoft Xbox.

If you set up using a code (see Code Setup), the colour for your streamer will be red. You can even choose a colour yourself – see the section Choose Colour.



MULTI-COLOURED RING



CHOOSE COLOUR

Once you have set up your devices, the colour of the menu ring reflects the devices you are controlling. For TV functions, the ring is yellow, for Audio green and for your streaming device it can be red, or a brand colour if you used the SimpleSet method. However if you'd prefer to choose your own colour to represent streamer control, you can. There are dozens of shades to choose from, and the procedure is simple. To perform this:

1. Hold down Channel Up and Channel Down until the ring blinks twice red
 2. Press the Channel Up key. The ring will light up white and stay lit
 3. Now each press of the Channel Up key will change the ring to a different colour. Pressing Channel Down will take it back to the previous colour. There are over 100 different shades to choose from.
 4. Once you have found the colour you like, press and hold down the OK key. The ring will blink twice in the current colour. From now on, when you are controlling your Streaming box the ring will light up in the colour you have chosen.
- If you reach the last colour, the ring will blink red twice and the colour will not be stored.
 - If you do not press a key for 10 seconds, the light will go out and no colour will be stored
 - If you want to change the colour at any point, just repeat the process.

APP SHORTCUT FEATURE

The Smart Control features 4 App Shortcut keys for viewing streamed content. If your original remote control already had a key for this - for example many Roku streamers will have a Netflix and Amazon key - then this key will perform exactly the same as the key on your original remote.



If your steamer supports these keys, they will function as Netflix, Amazon Video, Hulu (US Only) and YouTube. However if you did not have a key like this, you can use this key as a shortcut to a streaming app by programming a macro on it. You can set a macro to any service supported by an app on your streaming device. So if you would prefer BBC iPlayer or Plex, no problem. To program the macro, you first need to know the sequence of keys you need to press to always bring up the service you prefer, for example on an Apple TV, the sequence is Back (or Home), Menu Down and OK.

Once you have determined the sequence for your device, follow these steps:

1. Sit in front of your device with It switched on (not on standby)
2. Hold down the App Shortcut key (for example the "N" key) until the LED blinks twice
3. Now perform the sequence of keys exactly as would normally. The remote will operate your device and the macro is recorded in real time - so if it normally takes a few seconds for your device to react don't worry.
4. One you have finished the sequence - and the Streaming Service has started on your device - hold down the App Shortcut key until the LED blinks green twice and goes out. The macro is now stored.

Tips

- Make sure the Streamer is operating the device in question before programming
- If you find the Macro doesn't work as expected, you can just repeat the same sequence to reprogram
- When programming, wait for your device to respond first, the remote will remember the timing

MORE FUNCTIONS ONLINE

Although all the major features of your One For All remote are covered in this guide, there is even more functionality available online. For example you could set the remote into a "CEC Mode" that may control streamers that cannot be controlled by infrared, or potentially reprogram the input key to always select the same input on your TV. You can find tutorials, tips and extra info for this remote and others at:

www.oneforall.com/universal-remotes/urc-7935-streamer-remote



Connect with us



facebook.com/
oneforallworldwide



@oneforall.worldwide



linkedin.com/
company/one-for-all-worldwide/



youtube.com/
user/oneforallproducts



URC7935 R00
RDN-1150323
712876 - UK



Universal Electronics BV –
Europe & International
P.O. Box 3332, 7500 DH Enschede
The Netherlands